

Ashtabula County Metroparks Parks Communication Project

Program Narrative

Background

The Ashtabula County Metroparks' (ACMP) is in the process of building a regional and county-wide presence in the wake of recently received County Park Levy Funding passed by the voters for the first time. The ACMP currently has three open "parks", its 53 acre Harpersfield Covered Bridge Metropark, 66 acre Camp Peet Metropark (just opened) and the Western Reserve Greenway, a 27 mile stretch of paved rail-to-trail linear park running from Ashtabula to Trumbull County (approximately 240 acres).

While 10,000-15,000 visitors enjoy Harpersfield and the Greenway annually, Camp Peet is just beginning to be utilized, and Metroparks is still relatively unknown and otherwise not a destination for local school children, families and 200-300,000 potential tourists. Although ACMP was founded more than 50 years ago, it had a very small presence and little capacity to develop parks, attract visitors, and publicize/market its assets to the community and tourism venues until 2016.

Since the first full-time staff began 4 months ago, Ashtabula Metroparks has opened Camp Peet, is planning to construct trails and parking at 4 new parks in 2017, and is utilizing volunteers to develop and implement programming for its parks and greenway for four season activities this year. These additional parks to be opened would more than triple the acreage and number of facilities open to the public in a single year. With so much activity and concomitant expense, little funding is available for development of materials and marketing presence.

Statement of project objectives as they relate to needs within the agency, community, or state wide membership

The Ashtabula County Metroparks' (ACMP) is requesting \$1,500 from the OPRA Foundation Administrative Grant to cover a portion of the ACMP Parks Communication Project necessary for providing tools to allow prospective park users to enjoy newly opening parks in the Metropark system, helping publicize opportunities to bring people to touch nature in our parks system and to ramp up Metroparks' presence in and around Ashtabula County. Parks Communication Project is designed to generate printed brochures/maps and guiding materials for each of ACMP's open parks, brochure for the park system, and for electronically publicizing a schedule of events and programming for the park system for the first time.

Specifically, the Project includes development and publishing/printing 2000 brochures apiece for Harpersfield and Camp Peet Metroparks as well as for four special new parks with hiking trails and scenic beauty to be opened within the first six months of 2017: Blakeslee, Hatches Corners, Lampson Reservoir Preserve and Eyring Wetlands. ACMP will be installing trails and/or parking and signage at each of these new parks. The newly opened parks would add 638 acres

to ACMP's facilities which will now be open to the public. With the creation of these new open parks, trails, amenities, descriptions of the parks, natural and cultural heritage, and maps are necessary; however, outside printing was outside of ACMP's budgetary scope. The Project also includes a field guide to Hatches Corners being developed by a student intern under the supervision of a Lake Erie College professor, wildlife research developed in conjunction with Western Reserve Land Conservancy, Cleveland Museum of Natural History, the Nature Conservancy and local agencies.

In addition, ACMP plans to have a primary brochure printed describing its parks, showing their relative locations, and an electronic version that will be used and shared by its network and contact organizations.

Further, the thinly stretched staff are maximizing resources by coordinating with volunteers to develop a programming regimen for all its parks, but has no means of adding this feature onto its website without additional expense not in the budget. Thus, the project proposes to add capacity and capability to its website to create an easy access feature for activities and trail maps on its website. This will be augmented by social media marketing as well as both electronic and print coordination with Visitors Bureau and other tourism/countywide venues. The total printing and communications costs have been bid out for a total of \$3,114.00. Of this total, ACMP seeks \$1,500.00 in Administrative Grant funds from the OPRA Foundation. The balance of funds will be generated from within the ACMP's appropriation from its parks levy.

In addition, the staff and volunteer time required to develop and implement this project is estimated at more than \$5,000, and if needed, could be included as part of the organization's in-kind match.

Participating agencies

Ashtabula County Metroparks is the primary agency involved, but partners with the Ashtabula County Convention and Visitors Bureau in helping to market and reach audiences with its print and electronic materials. Further, ACMP will work with Ashtabula County Commissioners, Ashtabula County District Library, and other entities to disseminate information and materials regarding the new parks and trails. Finally, the ACMP will work closely with the media as often as possible to share information.

Description of specific goals and how results will be shared with appropriate audiences

Specifically, the ACMP will design and print 2,000 brochures (with trail maps) each of needed materials for six parks, its nature guide for Hatches Corners wetlands, a general parks brochure and map, and electronically disseminate a calendar of events for the parks in 2017. These documents will be available electronically via download links, of course, but having brochures and maps at the parks, on the trails, and at locally available businesses/agencies and schools will be essential in reaching thousands of new visitors each year. They will also serve as

templates for future materials and publications. Our existing network of organizations has been very generous with ACMP in promoting our activities.

Statement of anticipated impact/benefits to the agency, community, and/or state wide membership

As we develop a cohesive message and theme, the additional parks, trails, amenities and materials combined should multiply our usage and presence in both local and distant markets. The Project will permit the ACMP to better focus its resources in park and trail development, as well as park security, etc.

Benefits are multiple:

- Greater public awareness of park trails, amenities and facilities
- Significantly greater exposure to, and use of precious, world class outdoor experiences- steelhead trout fishing, migratory and wetland/waterfowl, boating, hiking, sightseeing, wetlands.
- Increased awareness by tourists, tourism industry and government in the role in the outdoors and to enjoy public access on 3 of Ohio's Wild and Scenic Rivers, Lake Erie, etc.
- Greater Ashtabula County residents' appreciation for the special outdoor environment they have here in Ashtabula County.
- More effective use and appreciation of ACMP's parks. Triple the number of visitors.
- Building a strong voter base of support by providing the services and experiences

Proposed timeline for completion

ACMP will develop the additional web improvements and begin publishing/marketing programming and events, as well as print brochures for Camp Peet Metroparks by 4/1/17. The other parks and trail maps will be printed between 4/1/2017 and 7/1/17. The field guide to Hatches Corners Metropark and the broader ACMP brochure and map will be printed and posted by 9/1/2017.

Plan for evaluation of outcomes

ACMP will have the printed brochures, will count the numbers disseminated, obtain feedback from its advisory council and from public forums, obtain totals from sign ins from events, utilize web counters, social media comments, as well as a trail counter to note increases in awareness and usage.

Additional material(s) may be attached as appendices if it is essential to explaining the proposal.

**Ashtabula County Metroparks
OPRAF Administrative Grant Report
2017 Grant Award**

Original Grant and Outcomes:

- 2000 Brochures for Each of the Open Parks = 6@ \$362*/per park
 - Harpersfield Metropark (1,000 printed) 11/5; \$170
 - Camp Peet Metropark (1,000 printed externally, 500 internally) 7/20, 9/4; \$172.80 w 15% off coupon), \$77
 - Lampson Reservoir Metropark (500 internally) \$77
 - Hatches Corners Metropark (combined w/field guide) (1000 printed externally, 7/16, \$131.20 + 500 internally. \$77)
 - Blakeslee Friends of Conneaut Metropark (500 internally; \$77)
 - Eyring Wetlands Metroparks (600 printed externally, 11/12, \$131.20, 500 internally 9/30; \$77)
- 2000 Field Guides to Hatches Corners 1@ \$310* (See above)
- 2000 General Brochures with All the Parks, including parks map 1@ \$362* (2,000 printed 7/20; \$294.40 w 15% off coupon)
- \$300 adding page to website for a Programming Calendar of Events \$300 (\$600 cost 8/1/2017)

<u>Total Printing/Publicity Costs Relevant to Grant:</u>	\$3,144	<u>(\$1,977.60 cost)</u>
<u>Proposed match from ACMP or additional grants:</u>	\$1,944	<u>(\$4,768+ matched)</u>
<u>Proposed OPRA grant:</u>	\$1500	<u>(\$1,500 received, used)</u>

Specific goals and how results were shared

ACMP proposed to design and print 2,000 brochures (with trail maps) each of needed materials for six parks, its nature guide for Hatches Corners wetlands, a general parks brochure and map, and electronically disseminate a calendar of events for the parks in 2017. These documents were to be available electronically via download links in addition to having brochures and maps at the parks, on the trails, and at locally available businesses/agencies and schools to reach thousands of new visitors each year. They were also to serve as templates for future materials and publications. Our existing network of organizations has been very generous with ACMP in promoting our activities.

What we did to Accomplish these Goals

ACMP designed and printed 2000 of a primary brochure as well as brochures for Camp Peet (redesigned and printed), Eyring Wetlands Metropark, Harpersfield Covered Bridge Metropark, Lampson Reservoir Metropark, a Field Guide to Hatches Corners Metropark, and a Friends of Conneaut Creek Blakeslee Metropark. Printing costs ended up being a little higher than anticipated, and ACMP realized that the trails maps and amenities were evolving much faster than the printed versions represented, so we ended up printing 1,000 of each of 5 brochures, 500 of the other two, and electronically posted and distributed to many organizations like Ashtabula County and its Convention and Visitors Bureau, who were generous with ACMP in promoting our activities. We printed 500 of each brochure in-house to have on hand prior to printing completed. Each cost \$77 for internal printing. We spent \$1,977.60 on printing & publicity, \$4,768+ for staff in-kind, and more than 40 volunteer hours (not calculated). (Receipts available)

**Ashtabula County Metroparks
OPRAF Administrative Grant Report
2017 Grant Award**

Original Grant and Outcomes:

- 2000 Brochures for Each of the Open Parks = 6@ \$362*/per park
 - Harpersfield Metropark (1,000 printed) 11/5; \$170
 - Camp Peet Metropark (1,000 printed externally, 500 internally) 7/20, 9/4; \$172.80 w 15% off coupon, \$77
 - Lampson Reservoir Metropark (500 internally) \$77
 - Hatches Corners Metropark (combined w/field guide) (1000 printed externally, 7/16, \$131.20 + 500 internally, \$77)
 - Blakeslee Friends of Conneaut Metropark (500 internally; \$77)
 - Eyring Wetlands Metroparks (600 printed externally, 11/12, \$131.20, 500 internally 9/30; \$77)
- 2000 Field Guides to Hatches Corners 1@ \$310* (See above)
- 2000 General Brochures with All the Parks, including parks map 1@ \$362* (2,000 printed 7/20; \$294.40 w 15% off coupon)
- \$300 adding page to website for a Programming Calendar of Events \$300 (\$600 cost 8/1/2017)

Total Printing/Publicity Costs Relevant to Grant:	\$3,144	<u>(\$1,977.60 cost)</u>
Proposed match from ACMP or additional grants:	\$1,944	<u>(\$4,768+ matched)</u>
Proposed OPRA grant:	\$1500	<u>(\$1,500 received, used)</u>

Specific goals and how results were shared

ACMP proposed to design and print 2,000 brochures (with trail maps) each of needed materials for six parks, its nature guide for Hatches Corners wetlands, a general parks brochure and map, and electronically disseminate a calendar of events for the parks in 2017. These documents were to be available electronically via download links in addition to having brochures and maps at the parks, on the trails, and at locally available businesses/agencies and schools to reach thousands of new visitors each year. They were also to serve as templates for future materials and publications. Our existing network of organizations has been very generous with ACMP in promoting our activities.

What we did to Accomplish these Goals

ACMP designed and printed 2000 of a primary brochure as well as brochures for Camp Peet (redesigned and printed), Eyring Wetlands Metropark, Harpersfield Covered Bridge Metropark, Lampson Reservoir Metropark, a Field Guide to Hatches Corners Metropark, and a Friends of Conneaut Creek Blakeslee Metropark. Printing costs ended up being a little higher than anticipated, and ACMP realized that the trails maps and amenities were evolving much faster than the printed versions represented, so we ended up printing 1,000 of each of 5 brochures, 500 of the other two, and electronically posted and distributed to many organizations like Ashtabula County and its Convention and Visitors Bureau, who were generous with ACMP in promoting our activities. We printed 500 of each brochure in-house to have on hand prior to printing completed. Each cost \$77 for internal printing. We spent \$1,977.60 on printing & publicity, \$4,768+ for staff in-kind, and more than 40 volunteer hours (not calculated). (Receipts available)

Staff Hours Log Sheet



Volunteer/Staff Name: Pam Blough, Office Manager hrly rate: \$16/hr

Project/Task/Event/Activity	Date(s)	Hours	Cost (\$16/hr)
OPRAF – Brochure development writing	Various	24	
Editing/Proofing	Various	16	
Recordkeeping, Administration, contracts	Various	16	
Website content writing	Various	4	
Total hours Office Manager	Various	60	\$960

OPRA7
Grand

Ashtabula Metroparks

From: Josie Kriss <josie@greatlakesprinting.com>
Sent: Friday, January 13, 2017 11:53 AM
To: pblough@ashtabulametroparks.com
Subject: Ashtabula Metroparks - QUOTES for Tri-Fold Brochures & COUPON attached
Attachments: New Year 2017 Offer.pdf

Importance: High

Hi Pam,

Brochure
8 ½" x 11"
80# Gloss Text
4 Color – 2 Sides
Tri-Fold
Layout/Design

Qty of 1000 - \$ 216.00
Qty of 2000 - \$ 362.00
***Price is per Each Version

Field Guide Brochure
8 ½" x 11"
80# Gloss Text
4 Color – 2 Sides
Tri-Fold
Camera Ready

Qty of 1000 - \$ 164.00
Qty of 2000 - \$ 310.00

Please find attached a coupon that may be used against your order. We will need your written approval for the above quotes indicating the quantity you would like to go with prior to providing any proofs for you. And, if you have any questions or concerns ~ please don't hesitate in contacting me!

Thanks for the opportunity to quote you!

-Josie

(Your Order will be Completed in Approximately 10 Business Days from the date of PROOF APPROVAL)

Thank you,

Josie Kriss

Customer Service Representative

Great Lakes Printing / Gazette Newspapers

46 W Jefferson St – Jefferson, OH 44047

Ph 440.576.9125 x110

Fx 440.576.2778

josie@greatlakesprinting.com



Great Lakes
PRINTING

**SAVE 10%* on your Commercial Printing or
Subscription orders between Jan 1 - Feb 28, 2017!**

**HAPPY, HEALTHY,
PROSPEROUS
2017!**

Please use coupon code HAPPYNEWYEAR2017 when placing your Printing or
Subscription order to take advantage of this special discount!

Call Josie at 440.576.9125 x110 to place your Printing order or
Katelynne at 440.576.9125 x101 to order a new Subscription TODAY!

*Prior sales excluded, offer expires 2.28.17



PAYMENT DATE
02/07/2017
COLLECTION STATION
Auditor

*PAYMENT
Rec'd
& deposited*

Ashtabula County Auditor
25 W. Jefferson St.
Jefferson, OH 44047

BATCH NO.
2017-00000487
RECEIPT NO.
2017-00000693
CASHIER
Sandy Leary

RECEIVED FROM
Metro Park : OPRA Grant
ck 1239

DESCRIPTION

PAYMENT CODE	RECEIPT DESCRIPTION	TRANSACTION AMOUNT
Metro Park LCGR	9402.910.100-412 OPRA Grant ck 1239 9402-101 9999 Cash Equity in Treasury \$1,500.00 9402 910.100-412 Local Grant Allocation \$1,500.00 9999-182 0002 Key Bank Checking Checking \$1,500.00 9999-280 9402 Treasurer's Equity Metropolitan Park \$1,500.00 <div style="text-align: right;"> Total Cash \$0.00 Total Check \$1,500.00 Total Charge \$0.00 Total Wire \$0.00 Total Other \$0.00 Total Remitted \$1,500.00 Change \$0.00 Total Received \$1,500.00 </div>	\$1,500.00

LAWN M. CRAGON
 PAID
 FEB 07 2017
 ASHTABULA
 TELLER

OHIO PARKS AND RECREATION ASSOCIATION FOUNDATION

1239

Ashtabula Metroparks

Date	Type	Reference	Original Amt.	Balance Due	2/1/2017 Discount	Payment
1/31/2017	Bill	Grant	1,500.00	1,500.00		1,500.00
					Check Amount	1,500.00

IN: ~~490~~ (Rev)
Exp: 650 (Exp)
Local 412 Local Grant
 Foundation Checking Grant

1,500.00



QUOTE: ASHM061517

JUNE 15, 2017

INTERNET MARKETING SOLUTIONS

WEB SITE DESIGN

Mary Ann Hill
9830 Smarty Jones Drive
Ruskin, FL 33573
c 440-218-0221
E designs9830@gmail.com
W ims-oh.com

TO:
ASHTABULA COUNTY METROPARKS
25 West Jefferson Street
Jefferson, OH 44047
c 440-576-0717
E info@ashtabulametroparks.com

DATE		HOURS	TOTAL
06/15/17	Add: 4 Park Pages, 1 Events Calendar, 1 Publications Page	n/a	\$600.00

TOTAL		\$600.00
-------	--	----------

Thank you !

Easy
Simple
Captivating
Professional
Websites





ROGER A. CORLETT, CPA
 Ashtabula County Auditor
 25 West Jefferson Street
 Jefferson, Ohio 44047-1092
 Phone: 440-576-3783 - Fax: 440-576-3797
 auditor@ashtabulacountyauditor.org

OPRAF

Purchase Order
 No. 2017-00002465

DATE 05/22/2017

Ship To
 METROPOLITAN PARK
 25 WEST JEFFERSON STREET
 JEFFERSON, OH 44047

Bill To
 METROPOLITAN PARK
 25 WEST JEFFERSON STREET
 JEFFERSON, OH 44047

VENDOR NO. 108167

PURCHASE ORDER NUMBER MUST APPEAR ON ALL INVOICES, SHIPPERS, BILL OF LADING AND CORRESPONDENCE

Vendor
 Mary Ann Hill
 Internet Marketing Solutions
 3786 Timberwoods Lane
 Rock Creek, OH 44084

DELIVER BY
SHIP VIA
FREIGHT TERMS
 PAGE 1 of 1
ORIGINATOR: Michelle Meaney

RESOLUTION #

QUANTITY	UNIT	DESCRIPTION	UNIT COST	TOTAL COST
1.0000	Item	CONTRACT SERVICES - OPRAF WEB PAGE GRANT 9402.910.100...-601.. - Contract Services 600.00	600.0000	\$600.00
TOTAL DUE				\$600.00

Federal Identification Number 34-6000128

COUNTY AUDITOR'S CERTIFICATE

It is hereby certified that the amount of \$ 600.00 required to meet the contract, agreement, obligation, payment or expenditure, for the above, has been lawfully appropriated or authorized or directed for such purpose and is in the County Treasury or in process of collection to the credit of the

fund free from any obligation or certification now outstanding

Dated 05/22/2017 Roger A. Corlett, CPA.
 Ashtabula County Auditor

By Order of the Board Of

By *[Signature]*
 Clerk

This order not valid unless County Auditor's certificate is signed

Prescribed by the Bureau of Inspection and Supervision of Public Offices



HOME PAGE ▾ MAKE A DIFFERENCE NEWS & EVENTS ▾ PARKS & TRAILS ▾ RESERVATIONS

USEFUL LINKS **PUBLICATIONS** CONTACT US 🔍

PUBLICATIONS A - Z

[Camp Peet, Clara D Peet Preserve Brochure - View/Download](#)

[Friends of Conneaut Creek Park Brochure - Coming Soon](#)

[Harpersfield Covered Bridge Metropark Brochure - Coming Soon](#)

[Hatches Corners Field Guide - View/Download](#)

[Hunting Permission Request - Coming Soon](#)

[Lampson Reservoir Metropark Brochure - Coming Soon](#)

[Leave No Trace - View/Download](#)

[North Shore Trail - Coming Soon](#)

[Parks Master Brochure - View/Download](#)

[Parks Master Map - View/Download](#)

[Park Rules & Regulations - View/Download](#)

[Peet Program Camping Permit - View/Download](#)



PUBLICATIONS A - Z

- [Camp Fire, Clara D Rest Preserve Brochure - View/Download](#)
- [Eyring Wetlands Preserve Metropark Brochure - View/Download](#)
- [Friends of Conestoga Creek Park Brochure - Coming Soon](#)
- [Harpersfield Covered Bridge Metropark Brochure - View/Download](#)
- [Harpers Centres Field Guide - View/Download](#)
- [Hunting Permission Request - View/Download](#)
- [Lampson Reservoir Metropark Brochure - Coming Soon](#)
- [Leave No Trace - View/Download](#)
- [North Shore Trail - View/Download](#)
- [Parks Master Brochure - View/Download](#)
- [Parks Master Map - View/Download](#)
- [Park Rules & Regulations - View/Download](#)
- [Pest Program Camping Permit - View/Download](#)
- [Snowmobiling on the Greenway - View/Download](#)
- [Special Permits - View/Download](#)
- [Strategic Plan 2017 Adopted April 12, 2017 - View/Download](#)
- [Volunteer Form - View/Download](#)
- [Western Reserve Greenway Brochure - View/Download](#)
- [WRNG Trail Map - View/Download](#)

ASHLAND COUNTY GREENWAY TRAIL



The Western Reserve Greenway is 43 miles through a mostly rural area. 27 miles are in Ashland County running to Warren, Ohio. The trail begins only a few miles from Lake Erie and a planned extension will bring it right to the shoreline of Lake Erie.

MAKING A DIFFERENCE

Join the Volunteer Bike Patrol - To enhance the experience for all users of the Greenway Trail

Trail Maintenance Donations - The 27 miles of Ashland County's Greenway are maintained entirely by volunteers.

Purchase a Trail Bench - A bench is a wonderful way to memorialize or honor a loved one. Great for a birthday, anniversary, new baby, graduation - it is the perfect gift for any occasion!

Volunteer Opportunities - Would you like to donate your time or skills to the Metroparks? We would like to hear from you!

[Download Ashland County Metroparks Volunteer Application](#)

PROUD RECIPIENT 2015 PLACEMAKING CAMPAIGN

JOIN US ON FACEBOOK



ASHLAND COUNTY METROPARKS



			HOME PAGE	MAKE A DIFFERENCE	NEWS & EVENTS	PARKS & TRAILS	RESERVATIONS	USEFUL LINKS	PUBLICATIONS	CONTACT US
13	14	15	16	17	18	19				
	Saving the Monarch Butterfly and Other Pollinators through responsible Native Gardening								Music Along the River 2017	
20	21	22	23	24	25	26				
Music Along the River 2017										
27	28	29	30	31						
	Photographers in the Park									

< July September >



ROGER A. CORLETT, CPA

Ashtabula County Auditor

25 West Jefferson Street
Jefferson, Ohio 44047-1092
Phone: 440-576-3783 ~ Fax: 440-576-3797
auditor@ashtabulacountyauditor.org

OPRAF

**Purchase Order
No. 2017-00002464**

DATE 05/22/2017

Ship To
METROPOLITAN PARK
25 WEST JEFFERSON STREET
JEFFERSON, OH 44047

Bill To
METROPOLITAN PARK
25 WEST JEFFERSON STREET
JEFFERSON, OH 44047

VENDOR NO. 2843

**PURCHASE ORDER NUMBER MUST APPEAR ON
ALL INVOICES, SHIPPERS, BILL OF LADING AND
CORRESPONDENCE**

Vendor
GAZETTE PRINTING / GREAT LAKES PRINTING
PO BOX 166
JEFFERSON, OH 440470166

**DELIVER BY
SHIP VIA
FREIGHT TERMS**

PAGE 1 of 1

ORIGINATOR: Michelle Meaney

RESOLUTION #

QUANTITY	UNIT	DESCRIPTION	UNIT COST	TOTAL COST
1.0000	Item	ADVERTISING & PRINTING - OPRAF BROCHURE GRANT 9402 910.100...604... - Advertising & Printing 2,532.00	2,532.0000	\$2,532.00
<i>7/20/17</i>	<i>2</i>	<i>PEET JAN 127478 - 172.80 MATCHES</i>	<i>- 304.00</i>	
<i>7/28/17</i>	<i>1</i>	<i>GENERAL PARKS INV 12713D -</i>	<i>- 294.40</i>	
TOTAL DUE				\$2,532.00

Federal Identification Number 34-6000128

COUNTY AUDITOR'S CERTIFICATE

It is hereby certified that the amount of \$ 2,532.00 required to meet the contract, agreement, obligation, payment or expenditure, for the above, has been lawfully appropriated or authorized or directed for such purpose and is in the County Treasury or in process of collection to the credit of the

By Order of the Board Of

By *Sam George*
Clerk

This order not valid unless County Auditor's certificate is signed.

Prescribed by the Bureau of Inspection and Supervision of Public Offices.

fund free from any obligation or certification now outstanding

Dated 05/22/2017 *Roger A. Corlett, CPA.*
Ashtabula County Auditor

Gazette Newspapers/Great Lakes Printing

PO Box 166
46 W Jefferson St
Jefferson, OH 44047
U.S.A.

Business Office: 440-576-9125
Fax: 440-576-2778

INVOICE

Invoice Number: 127730
Invoice Date: Jul 21, 2017
Page: 1

AC METROPARKS

Bill To:
ASHTABULA CO METROPARKS ATTN CLERK 25 W JEFFERSON ST JEFFERSON, OH 44047 U.S.A.

Ship to:
ASHTABULA CO METROPARKS ATTN: CLERK 25 W JEFFERSON ST JEFFERSON, OH 44047 U.S.A.

Please detach top portion and return with payment.

Customer ID	Customer PO	Payment Terms	
AC METROPARKS	PAM	Net 30 Days	
Sales Rep ID	Shipping Method	Ship Date	Due Date
GLP	Best Way		8/20/17

Quantity	Item	Description	Unit Price	Amount	Job ID
2,000.00	SHEET-2	MASTER PARKS BROCHURE (LAYOUT & DESIGN) 8 1/2" X 14" - DOUBLE PARALLEL FOLD - 80# GLOSS TEXT - 4 COLOR - 2 SIDES	0.18	368.00	
1.00	SHEET-2	20% COUPON 0617-0847	73.60	-73.60	

Gazette Newspapers/Great Lakes Printing

Invoice Number: 127730

Invoice Date: Jul 21, 2017

Check/Credit Memo No:

Subtotal	294.40
Sales Tax	
Total Invoice Amount	294.40
Payment/Credit Applied	
TOTAL	294.40

THANK YOU FOR YOUR BUSINESS!

Overdue invoices are subject to late charges.

ROGER A. CORLETT, CPA
Ashtabula County Auditor

DATE	INVOICE NO.	DESCRIPTION	NET AMOUNT
08/01/2017	127730	OPRAF BROCHURE GRANT advertising & printing-opraf brochure grant 1 ITM G/L Account: 9402 910.100-604 - advertising & printing 294.40	294.40 294.40
8/2			

Total: \$294.40



ROGER A. CORLETT, CPA

Ashtabula County Auditor

25 West Jefferson Street
Jefferson, Ohio 44047-1092
Phone: 440-576-3783 • Fax: 440-576-3777
auditor@ashtabulacountyauditor.org

OPRAF

Purchase Order
No. 2017-00002465

DATE 05/22/2017

Ship To
METROPOLITAN PARK
25 WEST JEFFERSON STREET
JEFFERSON, OH 44047

Bill To
METROPOLITAN PARK
25 WEST JEFFERSON STREET
JEFFERSON, OH 44047

VENDOR NO. 108167

PURCHASE ORDER NUMBER MUST APPEAR ON
ALL INVOICES, SHIPPERS, BILL OF LADING AND
CORRESPONDENCE

Vendor
Mary Ann Hill
Internet Marketing Solutions
3786 Timberwoods Lane
Rock Creek, OH 44084

DELIVER BY
SHIP VIA
FREIGHT TERMS
PAGE 1 of 1

ORIGINATOR: Michelle Meaney

RESOLUTION #

QUANTITY	UNIT	DESCRIPTION	UNIT COST	TOTAL COST
1.0000	Item	CONTRACT SERVICES - OPRAF WEB PAGE GRANT 9402.910.100...-601... - Contract Services 600.00	600.0000	\$600.00
8-14-17	1	<i>Invoice ASHM 81417</i> • EVENTS CALENDAR • PUBLICATION PAGE • ADD Brochures • new park pgs	-600.00	
TOTAL DUE				\$600.00

Federal Identification Number 34-6000128

COUNTY AUDITOR'S CERTIFICATE

It is hereby certified that the amount of \$ 600.00 required to meet the contract, agreement, obligation, payment or expenditure, for the above, has been lawfully appropriated or authorized or directed for such purpose and is in the County Treasury or in process of collection to the credit of the

fund free from any obligation or certification now outstanding

Dated 05/22/2017 Roger A. Corlett, CPA.
Ashtabula County Auditor

By Order of The Board Of

By *Sam Boyd*
Clerk

This order not valid unless County Auditor's certificate is signed

Prescribed by the Bureau of Inspection and Supervision of Public Offices.



INVOICE: ASHM081417

AUGUST 14, 2017

INTERNET MARKETING SOLUTIONS

WEB SITE DESIGN

Mary Ann Hill
9830 Smarty Jones Drive
Ruskin, FL
C 440-218-0221
E designs9830@gmail.com
W ims-oh.com

TO:

ASHTABULA COUNTY METROPARKS
25 West Jefferson Street
Jefferson, OH 44047
C 440-576-0717
E info@ashtabulametroparks.com

DATE		HOURS	TOTAL
06/15/17	Add: 4 Park Pages, 1 Events Calendar, 1 Publications Page	n/a	\$600.00
TOTAL			\$600.00

Thankyou !



NO. 606366

ROGER A. CORLETT, CPA
Ashtabula County Auditor

DATE	INVOICE NO.	DESCRIPTION	NET AMOUNT
08/22/2017	ASHM081417	OPRAF WEB PAGE GRANT contract services-opraf web page grant G/L Account: 9402.910.100-601 - contract services 600.00	600.00 600.00 1 ITM
8/23			Total: \$600.00

**ROGER A. CORLETT, CPA****Ashtabula County Auditor**25 West Jefferson Street
Jefferson, Ohio 44047-1092
Phone: 440-576-3783 - Fax: 440-576-3797
auditor@ashtabulacountyauditor.org

OPRAF

**Purchase Order
No. 2017-00002464****DATE 05/22/2017****Ship To****METROPOLITAN PARK
25 WEST JEFFERSON STREET
JEFFERSON, OH 44047****Bill To****METROPOLITAN PARK
25 WEST JEFFERSON STREET
JEFFERSON, OH 44047****VENDOR NO. 2843**PURCHASE ORDER NUMBER MUST APPEAR ON
ALL INVOICES, SHIPPERS, BILL OF LADING AND
CORRESPONDENCE**Vendor****GAZETTE PRINTING / GREAT LAKES PRINTING
PO BOX 166
JEFFERSON, OH 440470166****DELIVER BY
SHIP VIA
FREIGHT TERMS
PAGE 1 of 1****ORIGINATOR: Michelle Meaney****RESOLUTION #**

QUANTITY	UNIT	DESCRIPTION	UNIT COST	TOTAL COST
1.0000	Item	ADVERTISING & PRINTING - OPRAF BROCHURE GRANT 9402 910.100...-604... - Advertising & Printing 2,532.00	2,532.0000	\$2,532.00
7/20/17	2	PEET INV 127478 - 172.80 HATCHES	- 304.00	
7/28/17	1	INV 12749 - 131.20 GENERAL PARKS INV 127730 -	- 294.40	
10/10/17	1	(1000) Harpersfield INVOICE# 131027	- 213.00	
10/17/17	1	EXRING (100) EXRING (500) INVOICE# 131313	- 91.00	
TOTAL DUE				\$2,532.00

Federal Identification Number 34-6000128**COUNTY AUDITOR'S CERTIFICATE**It is hereby certified that the amount of \$ 2,532.00 required to meet the contract, agreement, obligation, payment or expenditure, for the above, has been lawfully appropriated or authorized or directed for such purpose and is in the County Treasury or in process of collection to the credit of the

fund free from any obligation or certification now outstanding

Dated 05/22/2017Roger A. Corlett, CPA.
Ashtabula County Auditor

By Order of the Board Of

By [Signature]

Clerk

This order not valid unless County Auditor's certificate is signed.

Prescribed by the Bureau of Inspection and Supervision of Public Offices.

Gazette Newspapers/Great Lakes Printing

PO Box 166
 46 W Jefferson St
 Jefferson, OH 44047
 U.S.A.

Business Office: 440-576-9125
 Fax: 440-576-2778

INVOICE

Invoice Number: 131313
 Invoice Date: Oct 13, 2017
 Page: 1

AC METROPARKS

Bill To:
ASHTABULA CO METROPARKS ATTN CLERK 25 W JEFFERSON ST JEFFERSON, OH 44047 U.S.A.

Ship to:
ASHTABULA CO METROPARKS ATTN: CLERK 25 W JEFFERSON ST JEFFERSON, OH 44047 U.S.A.

Please detach top portion and return with payment.

Customer ID	Customer PO	Payment Terms	
AC METROPARKS	PAM	Net 30 Days	
Sales Rep ID	Shipping Method	Ship Date	Due Date
GLP	Best Way		11/12/17

Quantity	Item	Description	Unit Price	Amount	Job ID
500.00	SHEET-1	EYRING BROCHURE 8 1/2" X 11" - 80# GLOSS TEXT - 4 COLOR - 2 SIDES - TRI-FOLD 1017-1308	0.18	91.00	

Gazette Newspapers/Great Lakes Printing
 Invoice Number: 131313
 Invoice Date: Oct 13, 2017
 Check/Credit Memo No:

Subtotal	91.00
Sales Tax	
Total Invoice Amount	91.00
Payment/Credit Applied	
TOTAL	91.00

THANK YOU FOR YOUR BUSINESS!

Overdue invoices are subject to late charges.



DELIVERY SLIP

Great Lakes
PRINTING

46 W. Jefferson Street • Jefferson, Ohio 44047
(440) 993-8781 • Fax: (440) 576-2778

DATE 10/11/17 JOB TICKET NUMBER 47536
P.O. NUMBER Pan

NAME Ashtabula Co Metroparks
ADDRESS 25 West Jefferson
Jefferson, OH

QTY.	DESCRIPTION
<u>500</u>	<u>Spring Brochures</u>

RECEIVED BY

Welcome to Camp Peet Metropark

History

Camp Peet Metropark is also known as the Clara D. Peet Nature Preserve, who generously dedicated this 65 acre paradise as a preserve in 1928. Camp Peet straddles Conneaut Creek, designated as an Ohio Wild and Scenic River, for ½ mile of serene views and unparalleled fishing and kayaking.

The property has nearly 2 miles of walking trails, fishing access, parking and a pavilion with picnic tables. The park is now open dawn to dusk to the public for fishing, birding and hiking. In addition, primitive camp sites designated for use exclusively by organized youth groups. Leashed dogs are permitted.

This property offers visitors an impressive stream forest buffer and floodplain supporting abundant wildflowers including Bluebells, one of the first spring flowers. You will encounter a wide variety of woodland and streamside plants and wildlife at this special place. Its sheer stream bluffs add depth and provide an impressive backdrop for hiking, birding and quiet nature walks. Camp Peet abuts the historic Creek Road Covered Bridge at Creek Road.

Conneaut Creek is known for its world renowned steel head trout fishing. Steelhead trout run some 75 miles from the mouth of Conneaut Creek along Lake Erie to the headwaters in Dickonsburg, Pennsylvania. These fish range in weight and size. Ohio's state record Steelhead trout is 21.3 lbs and 38 inches. The best fishing is from October until April.



Camp Peet, the Clara D. Peet Preserve was donated to the youth of Conneaut, Lakeville, Monroe and surrounding areas in 1928 by Clara D. Peet, a long time nature enthusiast. A trust was established to maintain and preserve the property for future generations. The property used to have 2 cabins and a dining hall that was used by 4H groups and local youth groups. Clara's vision is a testament in its lasting thus far 88 years.

The Trust signed a permanent conservation easement with the State of Ohio in 2007 to help maintain and improve the property.

In 2015, Ashtabula County Metroparks were asked by the Trustees to accept the property to carry on the public access and nature preserve commitment entrusted by the Peet family. The acquisition became official in February 2016, and the Trust was dissolved and their funds were entrusted to Ashtabula Metroparks. By agreement, Metroparks honors the wishes of Clara D. Peet but is permitted to expand the park usage.

In 2016 a group was formed called the Friends of Camp Peet who meet monthly and recommend to our park board any concerns, or needs for improvements. At present, a proposed pavilion and privy are being applied for through the Ohio EPA consistent with the terms of the conservation easement.

FOR MORE INFORMATION:

PHONE: (440) 576-0717

EMAIL: info@ashtabulametroparks.com

Ashtabula County Metroparks

MAIN OFFICE: 91 N. Chestnut St., Jefferson, Ohio 44047

MAIL: 25 W. Jefferson St., Jefferson, OH 44047



Ashtabula County Metropark

Camp Peet

*Clara D. Peet Preserve
Creek Rd. at Keefus*

— CONNEAUT, OH —



Visit

www.ashtabulametroparks.com

Camp Peet Metropark Trail Map

DIRECTIONS

From I-90 E:

Take exit 235 for OH-84/OH-193 toward N Kingsville, .02 miles.

Turn left onto OH-193 N/OH-84 W., 1.0 miles.

Continue to follow OH-193 N.

Follow Creek Rd. to Keefus Rd. in Conneaut.



Welcome

Please enjoy your Camp Peet Metropark safely, and help us protect and preserve your parklands by complying with park rules and regulations.

SAFETY AND ETIQUETTE

This is your metropark. Enjoy any and all park facilities at your own risk and responsibility.

Stay on trails. Taking shortcuts can be dangerous and causes erosion.

Wading and/or swimming in undesignated areas may be dangerous, especially after a rain.

Be prepared for sudden changes in weather conditions.

Carry and drink plenty of water. Dehydration is a leading cause of injuries on trails.

Trails can be slippery. Proceed carefully at your own risk.

Wildlife may be present on the trails. Feeding or approaching wildlife could be dangerous and is illegal.

Bicycles are permitted on paved or gravel designated trails only. Motorized vehicles are not permitted without group park permit.

Keep your parks beautiful. Carry out what you carry in.

Dogs must be leashed. Please clean up after your pet.



Ashtabula County **Metropark**



Welcome to Harpersfield Covered Bridge Metropark

History

The 53-acre Harpersfield Covered Bridge Metropark is scenic, picturesque, accessible and full of great ways to enjoy your day! This longtime favorite park property has been owned and managed by Ashtabula County Metroparks since 1964.

This beautiful park also has new picnic tables, bench swings and other facilities to add to your enjoyment.

The picturesque Harpersfield Covered Bridge is but one jewel here – it's a great place to see, access and enjoy the Grand River. The Grand River is one of just three State and National Wild and Scenic Rivers in Ohio! If you canoe or kayak, Harpersfield is a great place to put in or take out your boat, or catch some of the largest and most diverse array of fish in Ohio. The sheer bluffs, tree canopies, a small waterfall all just add to an experience you won't forget.

In addition to the iconic bridge and the Grand River, the park features fishing, a gift shop, parking areas, restrooms, picnic areas, and picnic shelters. The sweeping views of the scenic Grand River make this a good spot for bird watching, photography, picnics, gatherings, and quiet nature walks.

PAVILIONS AVAILABLE FOR RESERVATION

Check our website at www.ashtabulametroparks.com
email info@ashtabulametroparks.com
or call (440) 576-0717



Formerly the main route through Harpersfield prior to construction of SR 534 in 1965, the Harpersfield Covered Bridge has served pedestrians, horses, wagons, cars and trucks since its construction in 1868. The Great 1913 Flood forced the replacement of the northern portion of the bridge with a metal structure that ties in with the balance of the original wood frame covered bridge.

The land the shop sits on was once a Torrens Property; registered land originally recorded in Ashtabula County in 1924. The gift shop was an ice cream shop in the 1950s.

A decade later, the 16 acres and shop were acquired by the Ashtabula County Metropolitan Park District. Additional land and buildings that make up the entire park today were donated by the Ohio Water Service Company in the 1990s (south side).

The bridge was refurbished in 1992 and a matching pedestrian walkway was added. In the heart of the Grand River's and Ashtabula County's wine region, Harpersfield Covered Bridge Metropark is a few minutes south of I-90 and a 15-minute drive from Geneva State Park and Lodge.

Hours: The park is now open dawn to dusk (or 8pm whichever is earliest).

FOR MORE INFORMATION:

PHONE: (440) 576-0717

EMAIL: info@ashtabulametroparks.com

Ashtabula County Metroparks

MAIN OFFICE: 91 N. Chestnut St., Jefferson, Ohio 44047

MAIL: 25 W. Jefferson St., Jefferson, OH 44047



Ashtabula County Metroparks

Harpersfield Covered Bridge Metropark

*1225 Harpersfield Rd.
Harpersfield, Ohio*



For Fun, For Health, For Life
THERE'S A METROPARK FOR YOU!

Visit
www.ashtabulametroparks.com

Harpersfield Covered Bridge Metropark

DIRECTIONS

Harpersfield Covered Bridge Metropark is located on Old Harpersfield Road in Harpersfield Township. Old Harpersfield Road can be reached by taking State Route 307 west 1/2 mile from State Route 534. The Metropark is south of S.R. 307.



Welcome

Please enjoy your Metroparks safely, and help us protect and preserve your parklands by complying with park rules and regulations.

SAFETY AND ETIQUETTE

This is your metropark. Enjoy any and all park facilities at your own risk and responsibility.

Stay on trails. Taking shortcuts can be dangerous and causes erosion.

Wading and/or swimming in undesignated areas may be dangerous, especially after a rain.

Be prepared for sudden changes in weather conditions.

Carry and drink plenty of water. Dehydration is a leading cause of injuries on trails.

Trails can be slippery. Proceed carefully at your own risk.

Wildlife may be present on the trails. Feeding or approaching wildlife could be dangerous and is illegal.

Do not disturb, remove or plant vegetation.

Bicycles are permitted on paved or gravel designated trails only. Motorized vehicles are not permitted.

Keep your parks beautiful. Carry out what you carry in.

Dogs must be leashed. Please clean up after your pet.



Ashtabula County Metroparks



Welcome to Eyring Wetlands Preserve

History

This 52 acre Metropark is a birding and wildlife haven with over 40 acres of wetland habitat and gentle walking paths and officially open to the public in October 2017. Eyring Wetlands Metropark contains a complex constructed wetland system with ponds, vernal pools, swamp forest, swamp shrub, wet meadow marsh and aquatic beds.

The preserve has been donated to Ashtabula County Metroparks to provide public enjoyment and conservation experiences as well as a haven for a wide variety of plants and animals.

Donald Eyring has lovingly created a nature preserve that has a quiet grace and elegance that soothes the soul and stimulates the imagination. Most of these fauna were attracted with the creation of a wetland area nurtured with the planting of literally hundreds of species of area-native wetland plants. Come learn and explore how a cornfield has been transformed into a nature preserve!

In your visit, you may see Tree or Leopard frogs, Spotted newts and Painted turtles, Woodcock, wood ducks, herons and bald eagles.

This special place is 1/2 mile from the Grand River, just south of the Mechanicsville Covered Bridge in Austinburg Township, situated between Ashtabula Metroparks' Harpersfield Covered Bridge Metropark and Upper Grand River Metropark.



This Metropark was obtained through a donation of, and wetland preservation project by Donald Eyring. Mr. Eyring, with the assistance of noted wetland ecologist Dr. Edward Hauser has created a 52 acre wetland wildlife sanctuary hosting over 200 species of birds, dozens of species of mammals, macroinvertebrates, and waterfowl in this former conventional agricultural field.

Over the past 20 years, Mr. Eyring has participated in a wetland mitigation reserve program. Mitigation reserves are created to replace wetlands destroyed by development. Developers must restore wetlands on site where possible and also replace wetlands lost offsite through paying for the creation of additional wetlands. Eyring placed conservation easements on some portions of the farm, then transferred some 27 acres to Ashtabula County Metroparks in 1997. Since then, Eyring has enhanced these and developed additional wetland areas and had conservationists and scientists certify its proper functionality. Recently, Mr. Eyring generously donated road frontage and another 25 acres so Ashtabula County Metroparks could construct the parking lot and open the park to the public.

Hours: The park is open dawn to dusk

FOR MORE INFORMATION:

PHONE: (440) 576-0717

EMAIL: info@ashtabulametroparks.com

Ashtabula County Metroparks

MAIN OFFICE: 91 N. Chestnut St., Jefferson, Ohio 44047

MAIL: 25 W. Jefferson St., Jefferson, OH 44047



Ashtabula County Metroparks

Eyring Wetlands Preserve Metropark

*906 Mechanicsville Rd.
Austinburg, Ohio*



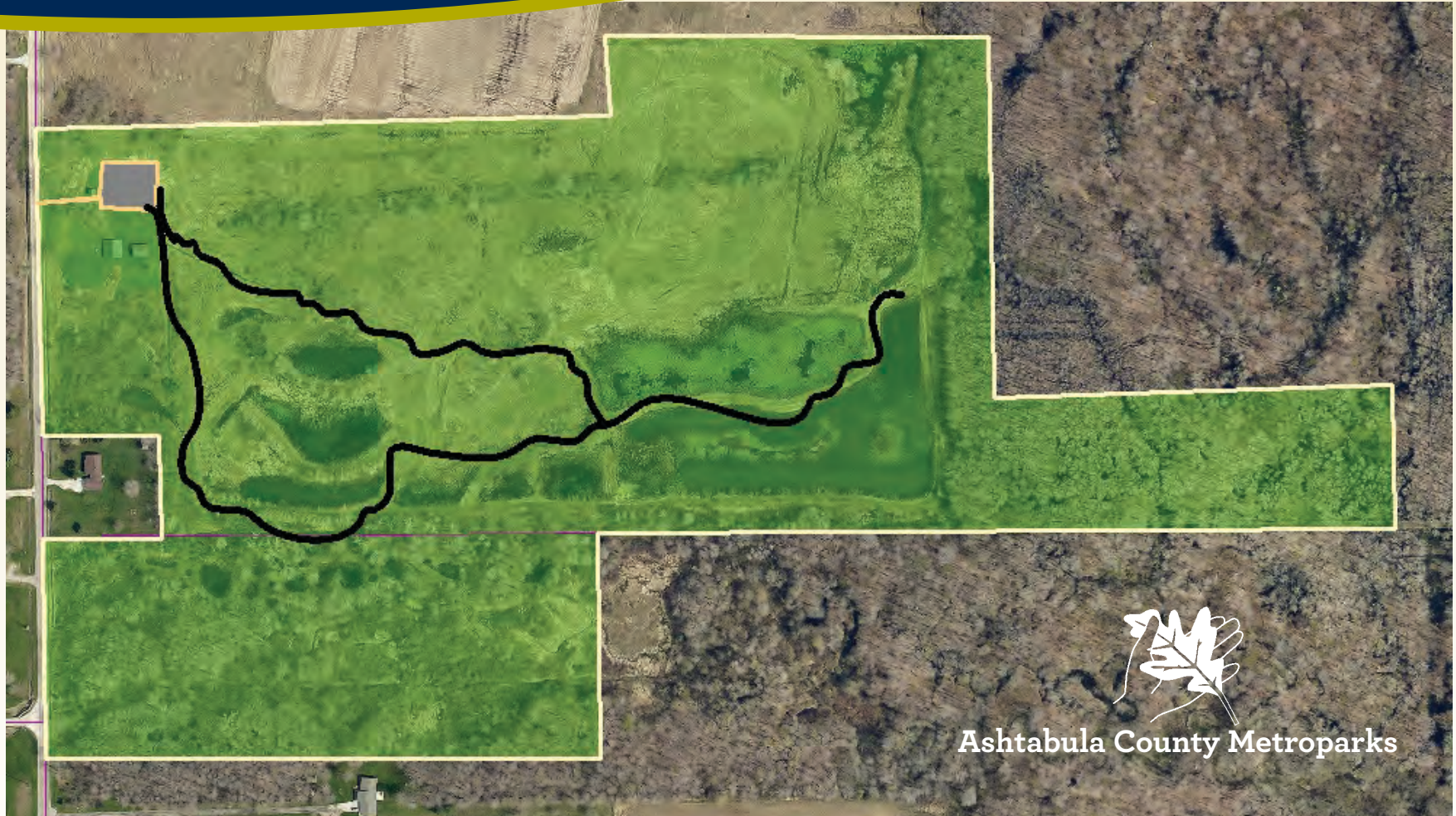
For Fun, For Health, For Life
THERE'S A METROPARK FOR YOU!

Visit
www.ashtabulametroparks.com

Eyring Wetlands Metropark 52 Acres

DIRECTIONS

Eyring Wetlands Preserve is located at 906 Mechanicsville Road in Austinburg, one mile north of Cork Cold Springs Road.



Ashtabula County Metroparks

Welcome

Please enjoy your Metroparks safely, and help us protect and preserve your parklands by complying with park rules and regulations.

SAFETY AND ETIQUETTE

This is your metropark. Enjoy any and all park facilities at your own risk and responsibility.

Stay on trails. Taking shortcuts can be dangerous and causes erosion.

Wading and/or swimming in undesignated areas may be dangerous, especially after a rain.

Be prepared for sudden changes in weather conditions.

Carry and drink plenty of water. Dehydration is a leading cause of injuries on trails.

Trails can be slippery. Proceed carefully at your own risk.

Wildlife may be present on the trails. Feeding or approaching wildlife could be dangerous and is illegal.

Bicycles are permitted on paved or gravel designated trails only. Motorized vehicles are not permitted.

Keep your parks beautiful. Carry out what you carry in.

Dogs must be leashed. Please clean up after your pet.





One of the wetlands at Hatches Corners Metropark surrounded by ferns

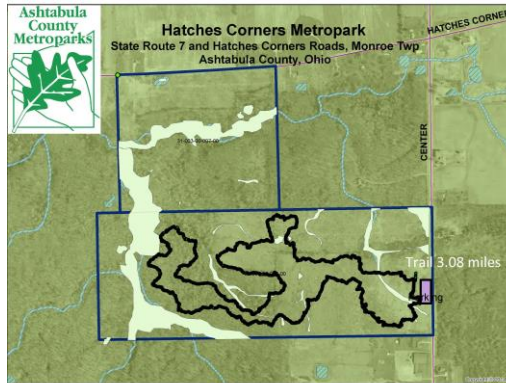
Facts about Hatches Corners

- The land that the park was founded on was used for agriculture throughout the 20th century and was logged for timber.
- Hatches Corners Metropark has a diverse landscape. The park is surrounded by farms and within the park are a variety of wetlands, grass meadows, and patches of forests.
- Many streams run through the park, collectively they are a part of the Conneaut Creek watershed.
- Before Hatches Corners Metropark was completed, there was an extensive biological survey conducted in 2009 & 2010.
- Over 200 plant species and 200 animal species were found in brief surveys performed.

Hatches Corners Metropark

About

Hatches Corners Metropark is located on a unique set of lands. The park is in Monroe Township in Ashtabula County. The park encompasses 202 acres of land.



The Horse Trail is 3.08 Miles Long

Contact Us

Phone: (440) 576-0717

Email: info@ashtabulametroparks.com

Web: www.ashtabulametroparks.com



ASHTABULA METROPARKS

25 W. Jefferson St
Jefferson, OH 44047



Yellow-bellied Sapsucker

FIELD GUIDE

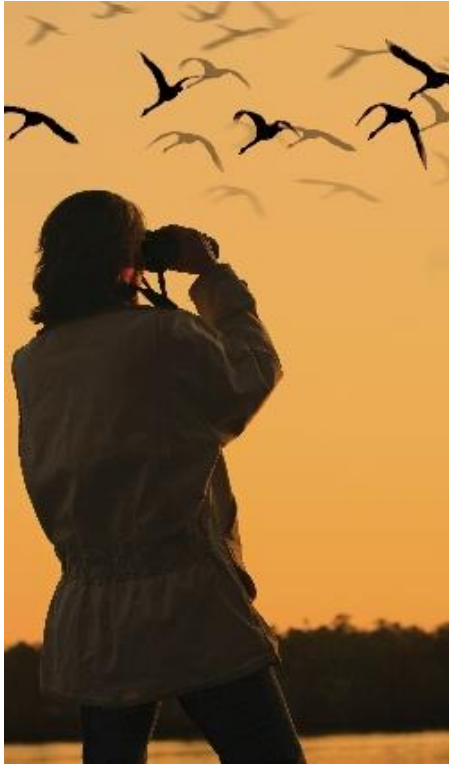
HATCHES CORNERS METROPARK

Vascular Plants

Vascular plants are present in wetland, forest and meadow habitats throughout Hatches Corners and include grasses, various sedges and ferns. Most noteworthy is the state listed and rare plant, Pale Sedge (*Carex Pallescens*).



Pale Sedge (*Carex Pallescens*) found.



Bird Watching

There were seven different breeding spots located in the 2009 and 2010 survey. These spots are great for bird watching. The following birds all can be found at Hatches Corners Metropark:

- Scarlet Tanager
- Yellow-bellied Sapsucker
- Ovenbird
- Wood Thrush
- Brown Creeper

Reptiles

Four different species of reptiles have been recorded on Hatches Corners Metropark in the 2009 – 2010 survey:

- Snapping Turtle
- Northern Water Snake
- Brown Snake
- Garter Snake

Wetland Categories

Almost every major country has its own classification for wetlands. The Ohio EPA details a metric score for categorizing wetlands 0-100 (with a 0 being a category one and 100 being a category three.) Hatches Corners Metropark contains all three categories of wetlands, including Category III, which includes evidence of rare, threatened or endangered plants. Below is an example of a shrub swamp wetland habitat found:



Northern Red Salamander

Amphibians

In the 2009 and 2010 biological survey, five different species of salamander were sampled and studied. They can be found in vernal pools, flowing streams, and dry streams. Those five species included the:

- Northern Two-lined Salamander
- Long-tailed Salamander
- Northern Red Salamander
- Northern Dusky Salamander
- Mountain Dusky Salamander

When salamanders are in their larval stage they are aquatic and prey on invertebrates. Because of this behavior scientists use salamander counts to classify a stream's health using the **PHWH Stream Class Indicator**.

Several toad and frog species were also observed in the biological survey. They can be found throughout the park.

History

Ashtabula County Metroparks was established in 1959 under Chapter 1545 of the Ohio Revised Code for the purpose of conserving Ohio's natural resources and to provide public recreation. In 2014, county voters approved Metroparks first ever park levy which now provides core funding for Ashtabula County Metroparks.

Organization

Board of Park Commissioners
Ashtabula County Metroparks is governed by a board of five Park Commissioners appointed from the community by the Ashtabula County Probate Court Judge and serve without pay for three year terms. Monthly meetings of the Commissioners are open to the public and input is welcome.

Staff

A fulltime staff of three led by an Executive Director manages the day to day operations of Ashtabula County Metroparks. Staff guide and assist the Board of Park Commissioners, develop a countywide park system, oversee development of ongoing and new projects, and secure supplemental funding from federal, state and local sources for new initiatives.

Advisory Council

Ashtabula County Metroparks has an advisory council which provides suggestions, advice and ideas to both staff and the Board of Park Commissioners. There are also working groups organizing programming, developing trails and funding initiatives.

Mission

To preserve adequate open space, to provide park and (passive) recreational areas to meet our growing needs, to maintain examples of the natural beauty and rural character of our county, to enhance our natural resources, educate about our natural surroundings, promote a pleasant and health-giving environment for the people of Ashtabula County.



Parks for Future Development

Turkey Creek Metropark - 602 acres, Conneaut

This largely inaccessible by Ohio road protected property forms the easternmost section of Lake Erie shoreline. Turkey Creek is now a Metroparks preserve with 225 acres of wooded wetlands, rare species of plants and wildlife with 3 miles of Turkey Creek, an outstanding trout fishing stream.

Upper Grand River Metropark - 135 acres, 3199 Cork Cold Springs Rd., Austinburg Twp.

This former youth and religious camp will be transformed into a wildlife and river sanctuary in a bend in the Grand River between the Morgan Swamp Preserve and Harpersfield Covered Bridge Metropark. This conservation easement protected park encompasses 3/4 mile of Grand River frontage, soaring forests, wetlands, unusual wildflowers and wildlife habitat that will be replete with shelters and meeting space, boat launch, and future trails.

Battles Road Metropark - 5 acres, Plymouth Twp.

This small rural park contains a large fishing pond for future development.

Pymatuning Valley Greenway - 177 acres

This former rail line is slated for future rail to trail development that will eventually connect Jefferson with Pymatuning State Park in SE Ashtabula County. Metroparks will develop this Greenway multi-use trail in phases to facilitate project progress.

Grand Lakes Nature Preserve - 60 acres

This long term project protects Grand Lakes, a former private development, for wildlife habitat and future park consideration.

Ashtabula County Metroparks

MAIL: 25 W. Jefferson St., Jefferson, OH 44047
info@ashtabulametroparks.com

PARK OFFICE: 91 N. Chestnut St., Jefferson, Ohio
(440) 576-0717

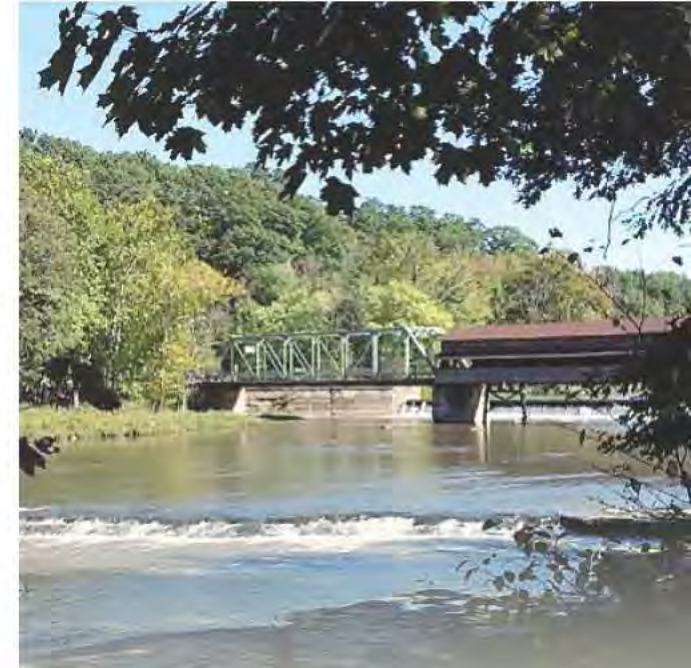


Ohio Parks and Recreation Association



FOUNDATION

Research | Education | Collaboration



For Fun, For Health, For Life

**Ashtabula
County
Metroparks**



THERE'S A METROPARK FOR YOU!

Visit

www.ashtabulametroparks.com

Parks currently open to the public

1 Western Reserve Greenway

This beautiful 27.5 mile long, 340 acre paved trail is the longest link in the proposed 110 mile Great Ohio Lake to River Greenway. The completely handicapped accessible Western Reserve Greenway is open for cycling, hiking, rollerblading, cross country, running, wildlife viewing, skiing, and snowmobiling. Phase II construction called the North Shore Trail will extend the trail 4.2 miles more to Ashtabula Harbor and Lake Erie. A map of the trail is available at www.ashtabulametroparks.com.

2 Harpersfield Covered Bridge Metropark 53 acres, 1101 Harpersfield Rd.

This beautiful park features the historic Harpersfield Covered Bridge, open to traffic and pedestrians. Steep bluffs, a waterfall, a streamside forest and picnic areas provide a spectacular backdrop for one of Ashtabula County's most popular parks. Access to the Grand River is available for boating and fishing. Amenities include covered bridge walks and overlooks, pavilions, restrooms, a play area and gift shop. This picturesque 53 acre park is located on Harpersfield Rd. south of SR 307 near SR 534.

3 Graham Road Benson Family Covered Bridge Metropark .29 acres, 4646 Graham Rd., Pierpont Twp.

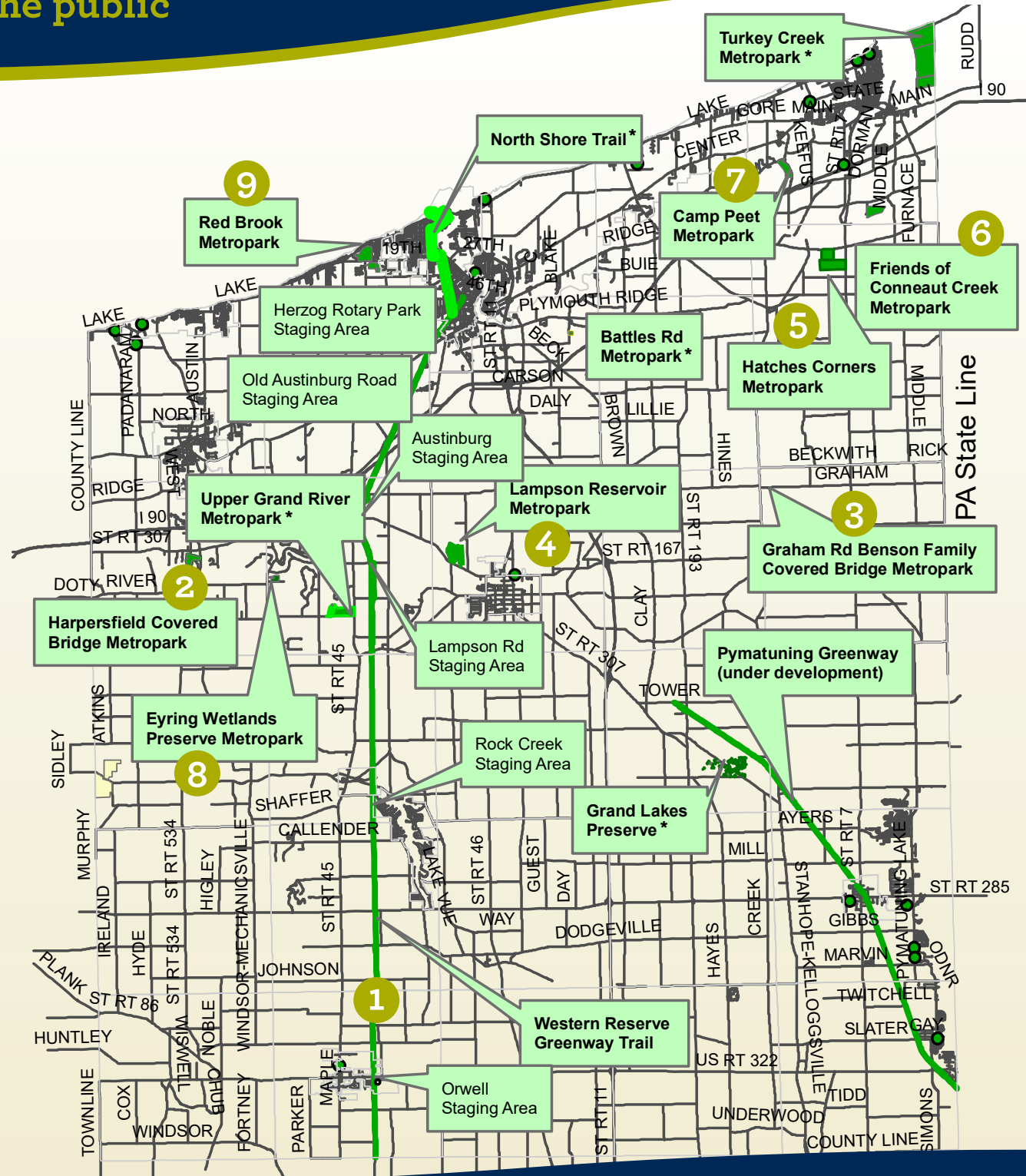
This bridge was a casualty of the 1913 flood, but it was reconstructed and now located on donated property in Pierpont Township. The bridge is open to pedestrian visitors and may be reserved for small picnics, weddings and family reunions.

4 Lampson Reservoir Metropark 162 acres, 1259 Rt. 307, Jefferson Twp.

This former municipal reservoir is now a wetland and woodland haven for waterfowl, birds and native plants along pristine Mill Creek. Enjoy fishing, birding, hiking and nature walks along 2 miles of primitive trails.

5 Hatches Corners Metropark 202 acres, 5467 Rt. 7, Monroe Twp.

This large and diverse park offers a tributary to Conneaut Creek, headwater streams, successional and wet forests, wetlands, meadows, recovering fields and 3 miles of primitive equine and hiking trails with a parking area that can accommodate horse trailers.



6 Friends of Conneaut Creek Metropark 79 acres, 27 Blakeslee Rd., Conneaut

3000' of frontage on a gorgeous stretch of Conneaut Creek just off South Ridge Rd. near Rte. 7 offers stunning views, upland meadows, butterfly garden and pristine forests with a primitive trail, and future fishing and stream access along the creek. The upper paved, accessible trail will be completed in fall of 2017.

7 Camp Peet Metropark 68 acres, 415 Creek Rd., Conneaut

The former youth group camp preserved by Clara D. Peet is now a Metropark with a mile of Conneaut Creek access, 1.5 miles of hiking trails, a pavilion and picnic area. Organized program groups can reserve overnight camping to enjoy spectacular bluffs, wildflowers, towering trees and pristine forests along with vernal pools, seeps and scenic views which include the adjacent Creek Road covered Bridge.

8 Eyring Wetlands Metropark - 55 acres, 906 Windsor Mechanicsville Rd., Austinburg Twp.

This newly expanded park features constructed wetlands and varied wetland habitats with wildflowers, plentiful bird and waterfowl species and hiking trails around and among the multiple shallow ponds and seeps. A new parking lot and signage will provide easier public access for opening this metropark to the general public in late 2017.

9 Red Brook Metropark 126 Acres, Lake Rd., Saybrook Twp.

This former country club and golf course is a work in progress now expected to be Ashtabula County Metroparks' newest park. This park has three miles of paved trails, beautiful forests, meadows and floodplain protecting two miles of Red Brook Creek. As a public park and nature preserve; just steps away from Lake Erie. Red Brook will have a sledding hill, a favorite running and walking route, and will be a haven for fishing, neighborhood picnics, and birding hikes. Winter sports will also include cross country skiing, snowshoeing, and snow biking. Opening late 2017.

*For future development



Metroparks provides bang for buck

8 hrs ago



When the Ashtabula County Metroparks levy passed in 2014, officials promised transparency and progress — a combination that is not always easy to pull off. Yet, as we continue to see tangible progress that moves the entire park system forward, we believe in giving credit where credit is due.

Last weekend, the Metroparks opened the Eyring Wetlands Preserve Metropark on Windsor-Mechanicsville Road, the eighth Ashtabula County Metropark open to the public, and the fifth since the levy passed. To get the park ready for the public, the Metroparks installed a parking lot, kiosk, signage and a park entrance for pedestrians so the 9-mile trail at Eyring Wetlands Preserve can be accessed by the general public from dawn to dusk.

But it's not just the recent opening of Eyring that has us, and we hope many in the community, excited.

The work Ashtabula County Metroparks Director Larry Frimerman and the board have done in his year-plus on the job has been heartening.

In late September, the Metroparks announced it was able to secure a huge, \$1.16 million grant that will pay for a 4.2-mile extension of the Western Reserve Greenway Trail from West Avenue to the Ashtabula Harbor within the next several years. This would be a monumental step forward for the North Shore Trail project that has been in discussion for almost 30 years. Completing this project would mean the trail would be within 1.5 miles of almost every part of the city, according to the Metroparks.

The Metroparks has also worked with the city of Conneaut to change ordinances to allow a limited amount of hunting — on a lottery basis — at its new, 600-acre Turkey

Creek facility along the Lake Erie shore near the Pennsylvania state line.

And these are just the projects moving forward in the last few months.

We think the Metroparks has, thus far, fulfilled its pledge and done more than pay lip service to the notions of progress and transparency. Voters can really see where the money is going, both in direct improvements and additional parks as well as in the addition of a full-time director.

Parks and recreation opportunities are growing in importance when it comes to business attraction and retention. Site selectors always investigate quality of life options, and unlocking the fantastic potential of all the natural attractions Ashtabula County has to offer goes a long way.

And they absolutely improve the quality of life. Too many children today are stuck behind screens and don't get out and engage nature. Children who hike the trails bring a special wonder — instead of seeing a cute video of squirrel on their screens, they can be blown away by nature in real life, from beautiful plants and trees, soaring birds, and yes, even real life squirrels.

We also hope to see positive nature and trail growth come from the efforts of the newly formed bipartisan Ohio Legislative Trails Caucus, which includes State Sen. Sean O'Brien, D-Bazetta, whose district includes Ashtabula County. The caucus' goal is to provide a focus and advocate that can help lead to more funding and better education.

The trails are also a key component in tourism efforts, as Stephanie Siegel, Ashtabula County Convention and Visitors Bureau executive director, works on promoting more opportunities to turn a county visit from a day-trip into an extended stay. While the lake and wineries are the biggest draws, the trails and nature preserves offer plenty of other "undiscovered" options for visitors.

We're excited to see where all these efforts go. And, like the trails themselves, they show how we are all interconnected and reliant on each other.